



Setting up Dell™ vRanger™ on the Dell DR Series System

Dell Engineering
April 2015

Revisions

| Date | Description |
|------------|-----------------|
| April 2015 | Initial release |

THIS WHITE PAPER IS FOR INFORMATIONAL PURPOSES ONLY, AND MAY CONTAIN TYPOGRAPHICAL ERRORS AND TECHNICAL INACCURACIES. THE CONTENT IS PROVIDED AS IS, WITHOUT EXPRESS OR IMPLIED WARRANTIES OF ANY KIND.

© 2015 Dell Inc. All rights reserved. Reproduction of this material in any manner whatsoever without the express written permission of Dell Inc. is strictly forbidden. For more information, contact Dell.

PRODUCT WARRANTIES APPLICABLE TO THE DELL PRODUCTS DESCRIBED IN THIS DOCUMENT MAY BE FOUND AT: <http://www.dell.com/learn/us/en/19/terms-of-sale-commercial-and-public-sector> Performance of network reference architectures discussed in this document may vary with differing deployment conditions, network loads, and the like. Third party products may be included in reference architectures for the convenience of the reader. Inclusion of such third party products does not necessarily constitute Dell's recommendation of those products. Please consult your Dell representative for additional information.

Trademarks used in this text:

Dell™, the Dell logo, and Dell vRanger™ are trademarks of Dell Inc. Other Dell trademarks may be used in this document. Microsoft®, Windows®, Windows Server®, Internet Explorer®, MS-DOS®, Windows Vista® and Active Directory® are either trademarks or registered trademarks of Microsoft Corporation in the United States and/or other countries. VMware®, Virtual SMP®, vMotion®, vCenter™, vSphere®, ESX®, and ESXi™ are registered trademarks or trademarks of VMware, Inc. in the United States or other countries.

Other trademarks and trade names may be used in this document to refer to either the entities claiming the marks and/or names or their products and are the property of their respective owners. Dell disclaims proprietary interest in the marks and names of others.



Table of contents

| | |
|---|----|
| Revisions | 2 |
| Executive summary | 4 |
| 1 Installing and configuring the DR Series system | 5 |
| 2 Configuring an NFS share for backup using vRanger | 14 |
| 3 Configuring an RDA container for backup | 15 |
| 3.1 Create an RDS container | 15 |
| 3.2 Configure the Dell RDA device in vRanger | 17 |
| 4 Setting up vRanger | 19 |
| 5 Viewing a history of optimized copies in the DR Series system GUI | 27 |
| 6 Configuring replication at the source | 28 |
| 6.1 Create an RDS container in the Dell DR Series system for the replication target | 28 |
| 6.2 Configure replication at the target container in vRanger | 29 |
| 7 Setting up the DR Series system cleaner | 30 |
| 8 Monitoring deduplication, compression, and performance | 31 |



Executive summary

This whitepaper provides information about how to set up the Dell DR Series system as a backup to disk target for Dell vRanger backup software. This paper is a quick reference guide and does not include all DR Series system deployment best practices.

For additional information, see the DR Series system documentation and other data management application best practices whitepapers for your specific DR Series system at:

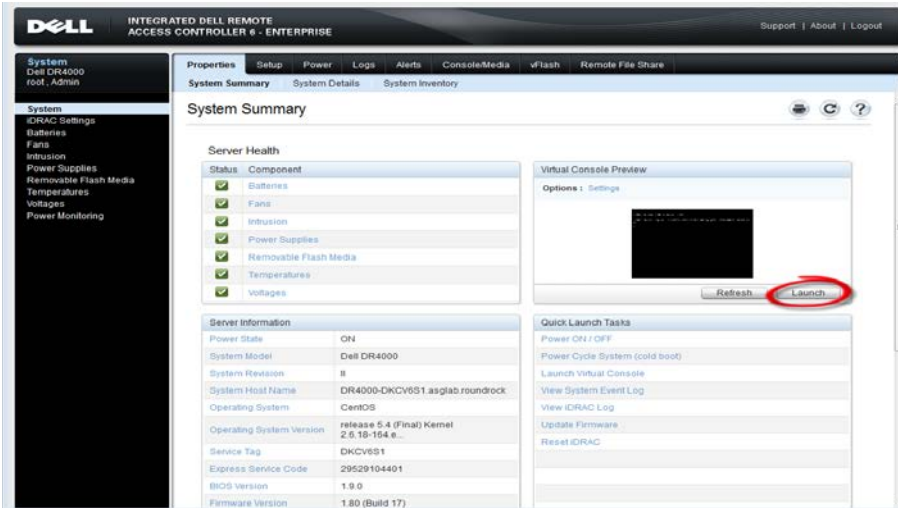
<http://www.dell.com/powervaultmanuals>

NOTE: The DR Series system and the vRanger build version and screen shots used for this whitepaper may vary slightly, depending on the version of the DR Series system or vRanger software version you are using.

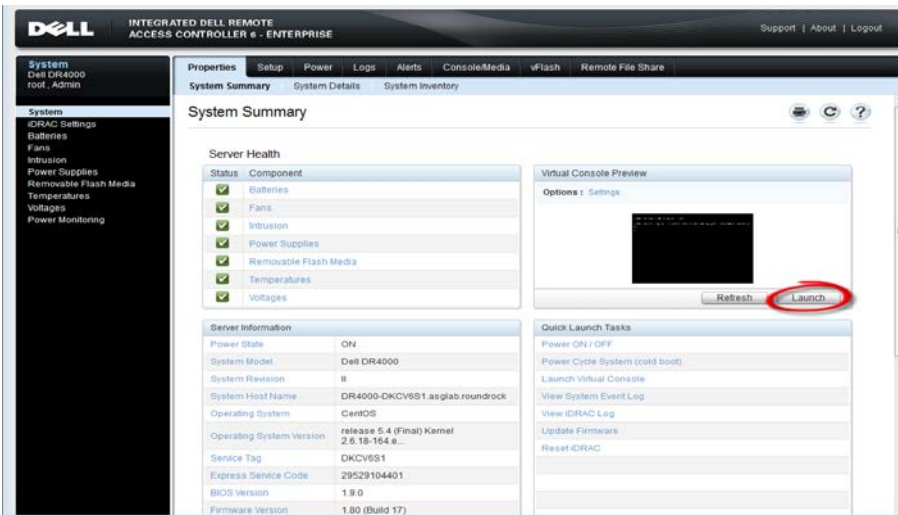


1 Installing and configuring the DR Series system

1. Rack and cable the DR Series system appliance, and power it on.
2. Log onto iDRAC using the default address, **192.168.0.1**, with the username: **root** and password: **Calvin**.



3. Launch the virtual console.



- When the virtual console opens, log on to the system as:
user: **administrator**, password: **St0r@ge!**

NOTE: The "0" in the password is the numeral zero.

```
Ucarina release 1 (EAR-1.00.00) Build: 32850
Kernel 2.6.18-164.el5 on an x86_64

localhost login: administrator
Password: St0r@ge!
```

- Set the user-defined networking preferences as needed.

```
Would you like to use DHCP (yes/no) ?
Please enter an IP address:
Please enter a subnet mask:
Please enter a default gateway address:
Please enter a DNS Suffix (example: abc.com):
Please enter primary DNS server IP address:
Would you like to define a secondary DNS server (yes/no) ?
Please enter secondary DNS server IP address:
```

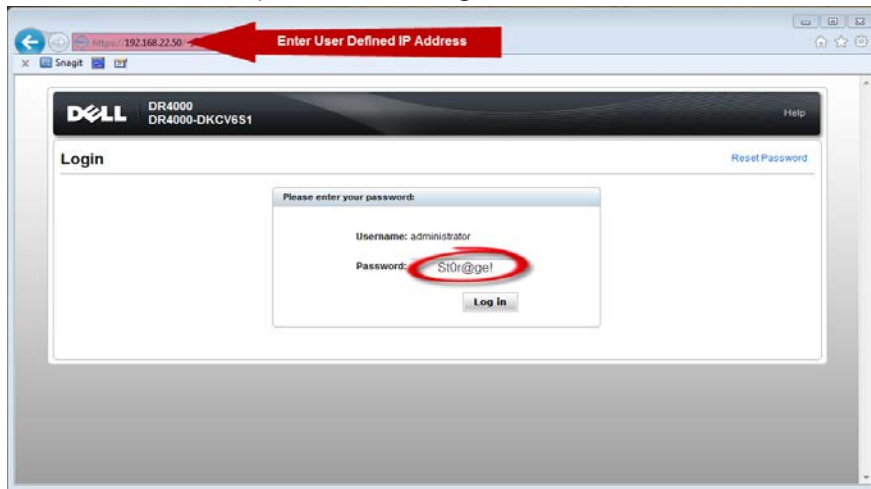
- View the summary of preferences and confirm that the settings are correct.

```
=====
                          Set Static IP Address
IP Address      : 10.10.86.108
Network Mask    : 255.255.255.128
Default Gateway : 10.10.86.126
DNS Suffix      : idmdemo.local
Primary DNS Server : 10.10.86.101
Secondary DNS Server : 143.166.216.237
Host Name       : DR4000-5

Are the above settings correct (yes/no) ? _
```



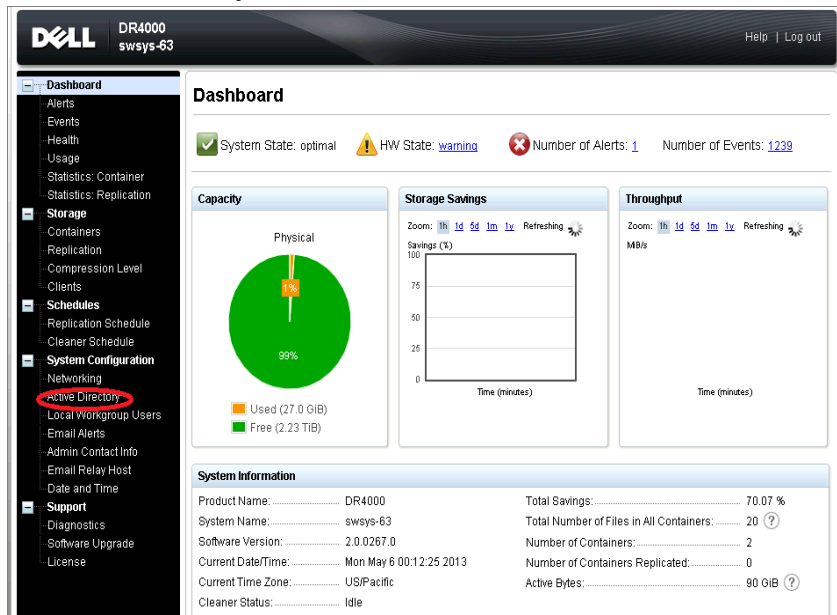
7. Log on to the DR Series system administrator console, using the IP address you just provided for the DR Series system as:
user: **administrator**, password **St0r@ge!**



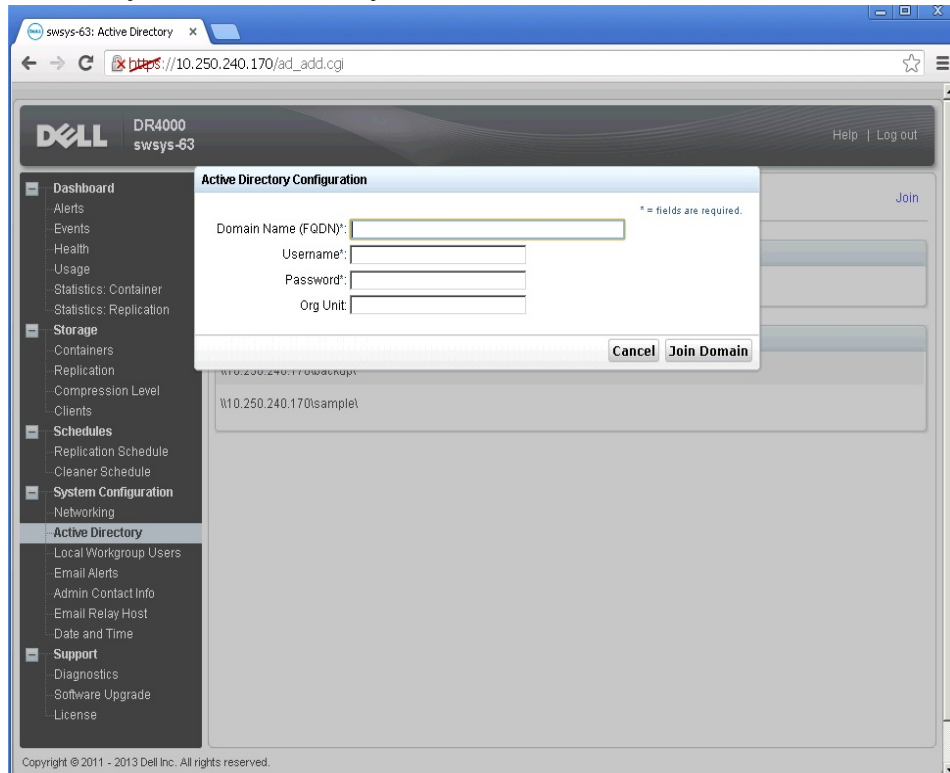
8. Join the DR Series system to Active Directory as described below.

NOTE: If you do not want to add the DR Series system to Active Directory, see the *Dell DR Series Owner's Manual* for guest logon instructions.

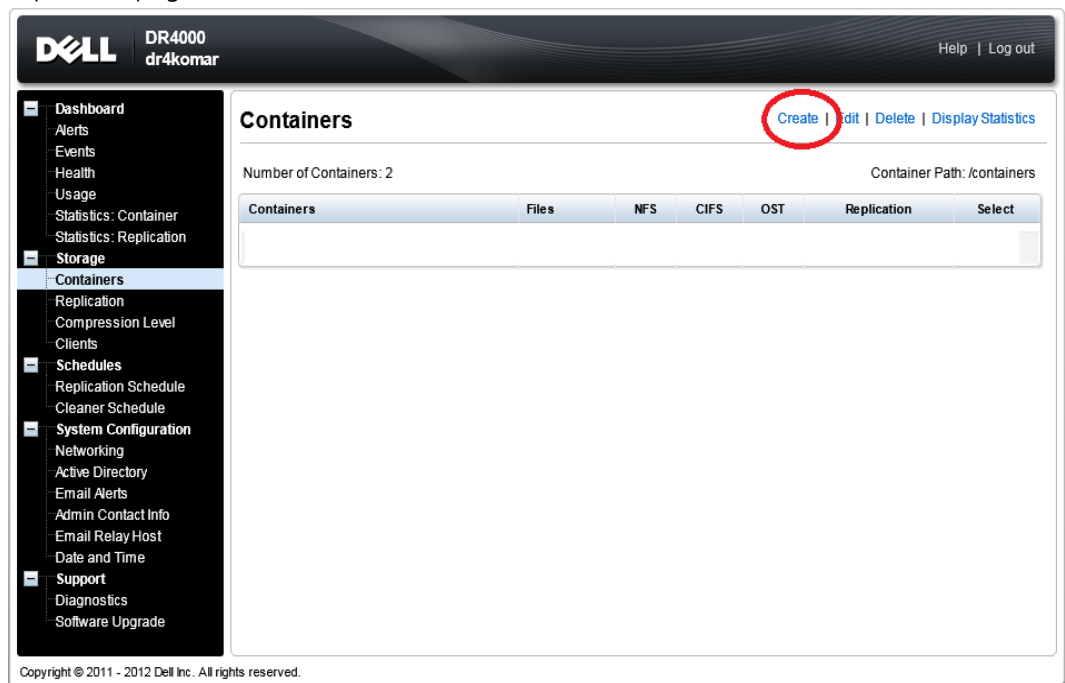
- a. Click **System Configuration > Active Directory** in the left navigation area of the DR Series system GUI.



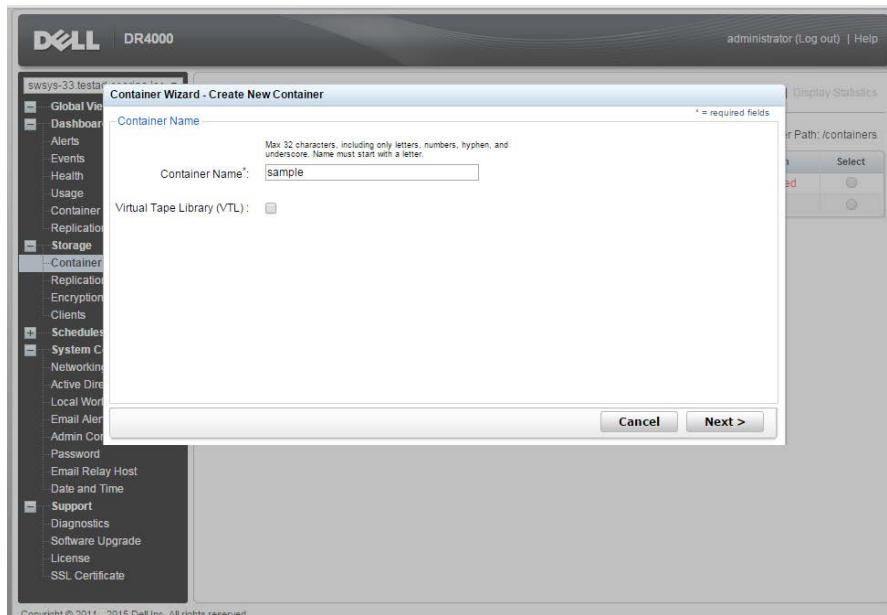
b. Enter your Active Directory credentials and click **Join Domain**.



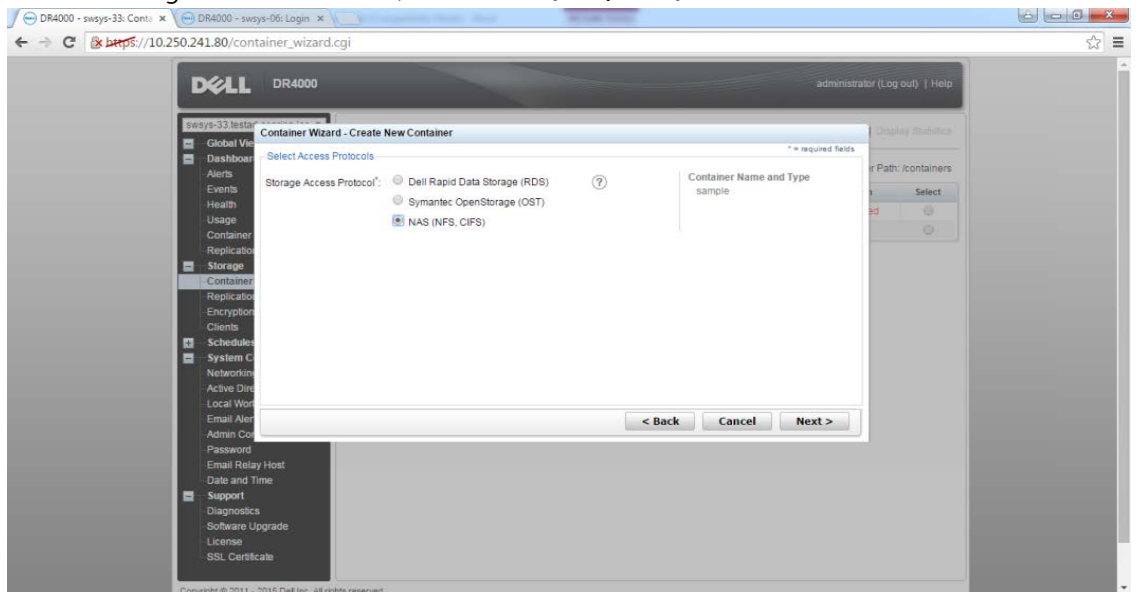
9. Select **Containers** on the left navigation area, and then click the **Create** link at the top of the page.



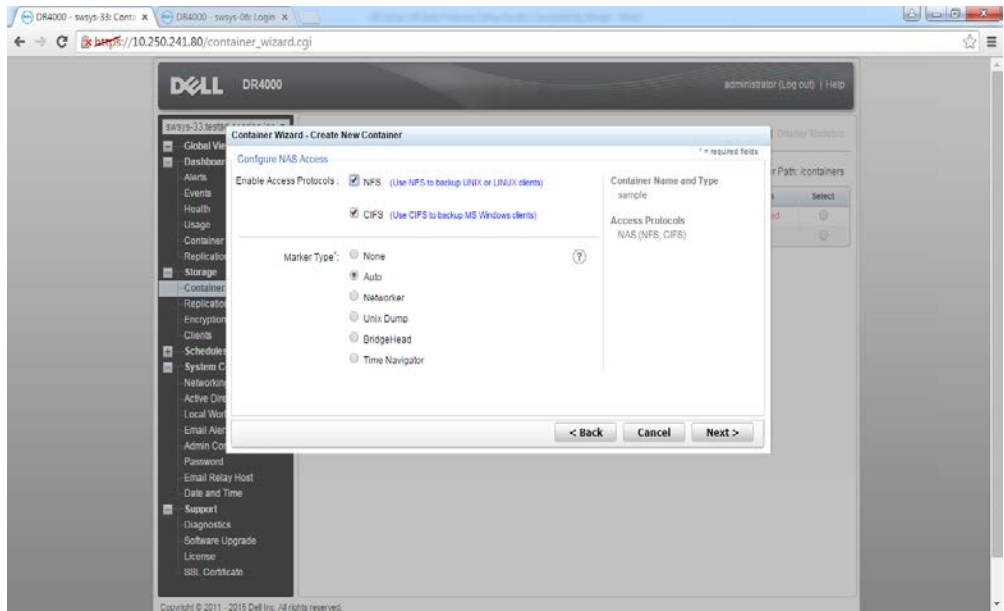
10. Enter a Container Name and click **Next**.



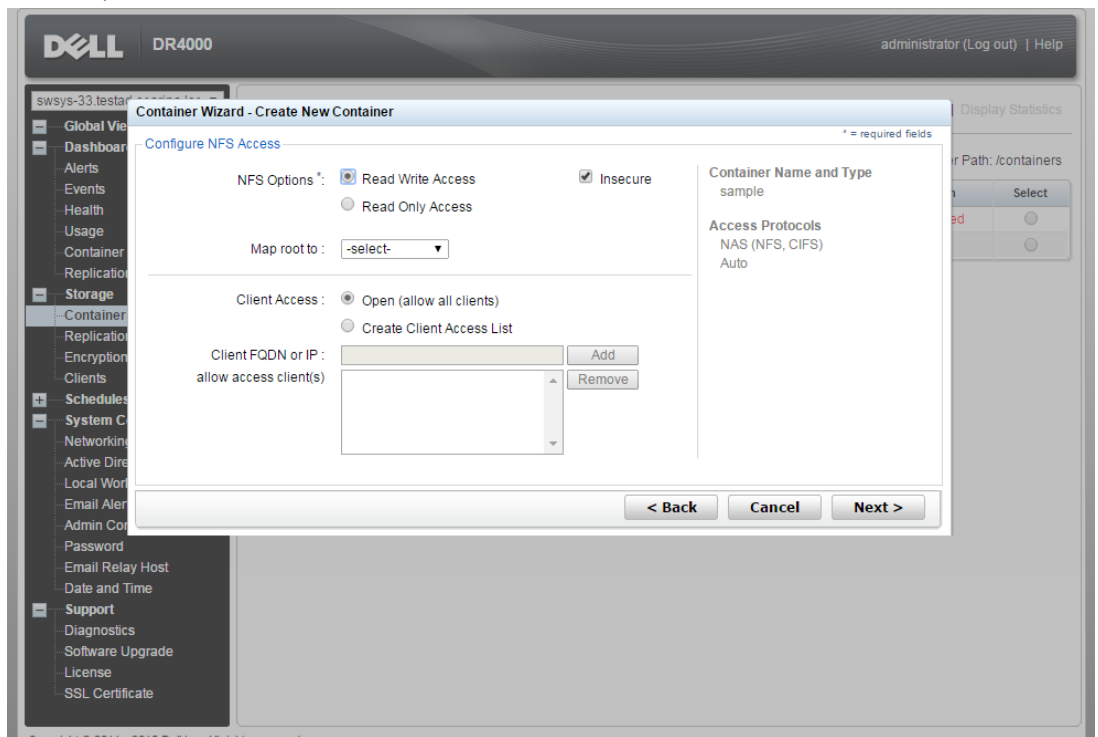
11. For the Storage Access Protocol, select **NAS (NFS, CIFS)** and click **Next**.



12. Select **NFS** and **CIFS** as appropriate. (vRanger supports both CIFS and NFS protocols.)

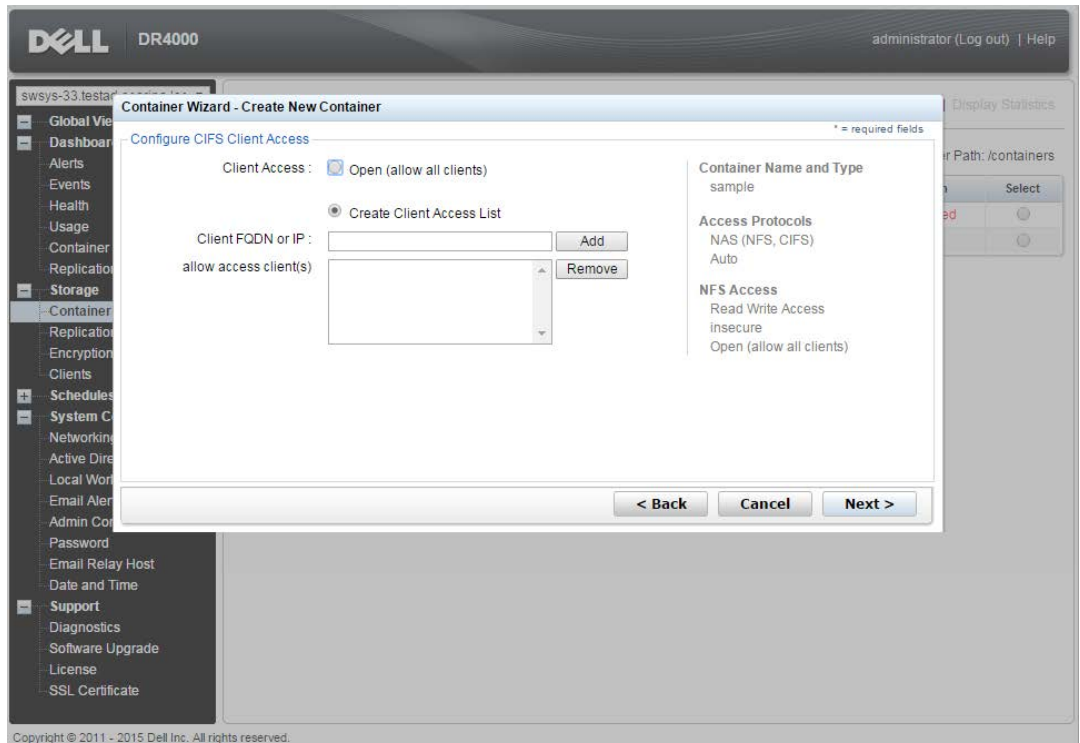


13. For NFS, set the client access credentials and click **Next**.



14. For CIFS, set the client access credentials and click **Next**.





NOTE: For improved security, Dell recommends adding IP addresses for the following components (Not all environments will have all components):

- Backup console (vRanger Server)
- ESXi hosts (as vRanger backs up these VMs)
- Backup proxies (for vSphere environments)



15. Click **Create a New Container**, and then confirm that the container was added.

The screenshot shows the Dell DR4000 swsys-63 web interface. The browser address bar shows <https://10.250.240.170/main.cg?success=1>. The page title is "Containers" and it includes links for "Create", "Edit", "Delete", and "Display Statistics".

A message box with a green header and a checkmark icon contains the following text:

- Successfully added container "sample".
- Successfully enabled container "sample" with the following marker(s) "Auto".
- Successfully added CIFS connection for container "sample".

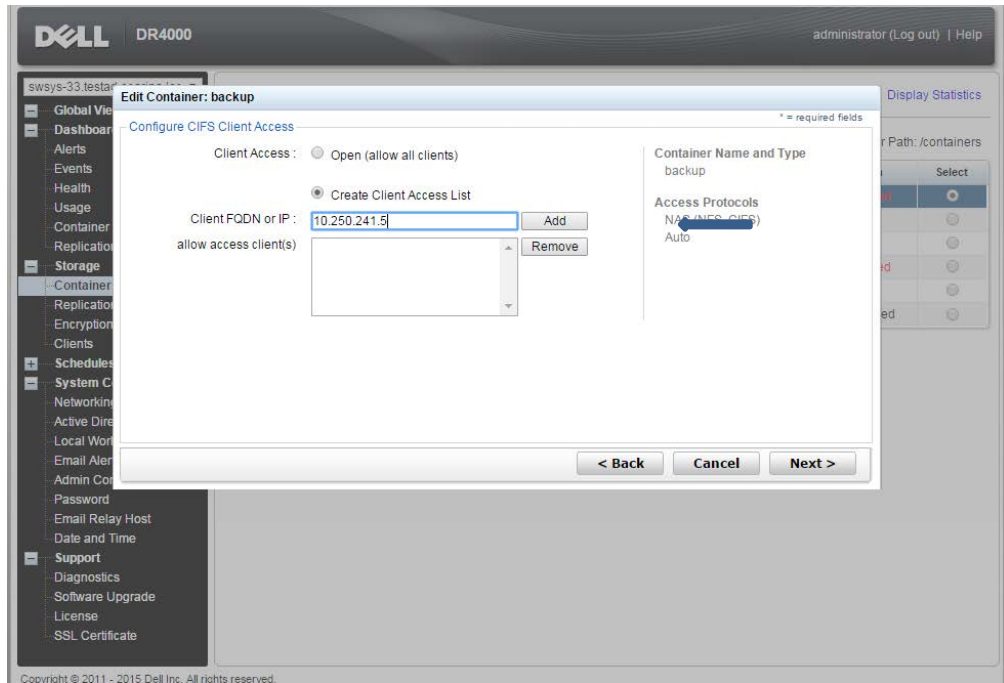
Below the message, it states "Number of Containers: 2" and "Container Path: /containers". A table lists the containers:

| Containers | Files | NFS | CIFS | OST | Replication | Select |
|------------|-------|-----|------|-----|----------------|-----------------------|
| backup | 19 | ✓ | ✓ | | Not Configured | <input type="radio"/> |
| sample | 0 | | ✓ | | Not Configured | <input type="radio"/> |

At the bottom of the page, it says "Copyright © 2011 - 2013 Dell Inc. All rights reserved."



16. Select the container and then click **Edit**. Reconfigure client access permissions, if required, and click **Next**. Make a note of the container path, which you will use later to target the DR Series system.



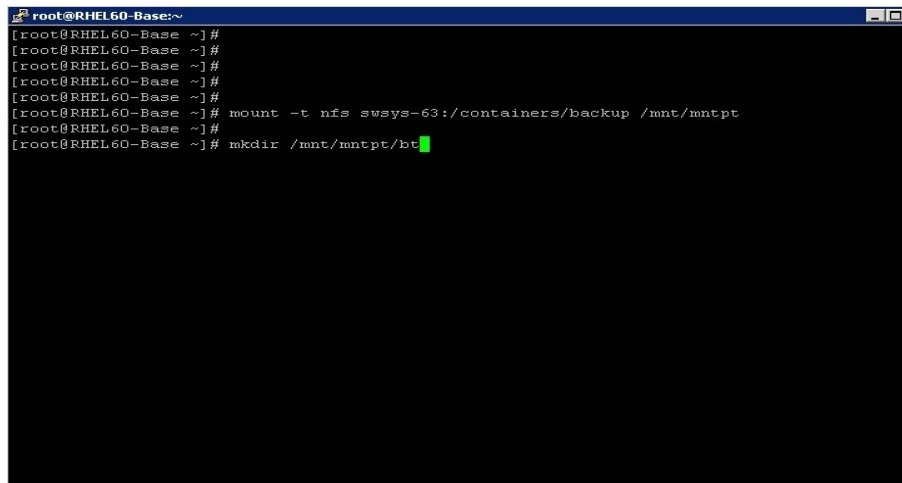
17. Click **Modify this container** to save any changes you made, or click **Cancel** to exit.



2 Configuring an NFS share for backup using vRanger

For NFS backup using vRanger, you need to create a target folder under the NFS share directory. This folder is a subdirectory of the NFS Export directory and is the location to which save points will be written. (This configuration is not required when adding a CIFS share.)

1. Mount the NFS share onto any of the NFS clients available in the environment.
2. Create a directory by using the `mkdir` command inside the mounted directory.



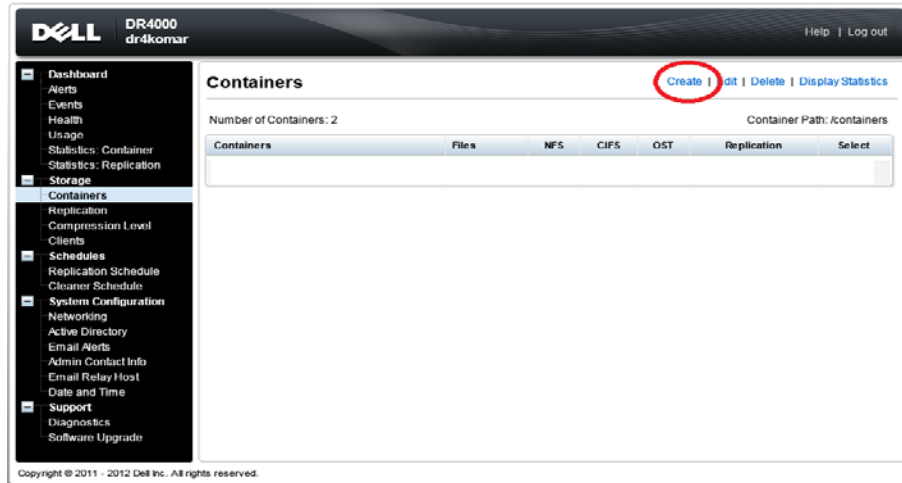
```
root@RHEL60-Base:~  
[root@RHEL60-Base ~]#  
[root@RHEL60-Base ~]#  
[root@RHEL60-Base ~]#  
[root@RHEL60-Base ~]#  
[root@RHEL60-Base ~]#  
[root@RHEL60-Base ~]# mount -t nfs swsys-63:/containers/backup /mnt/mntpt  
[root@RHEL60-Base ~]#  
[root@RHEL60-Base ~]# mkdir /mnt/mntpt/backup
```



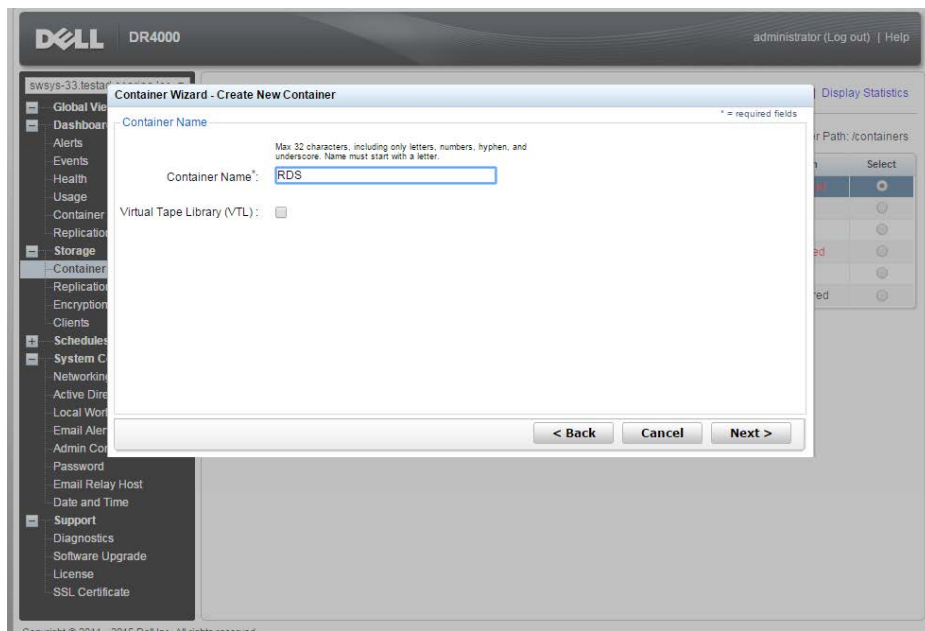
3 Configuring an RDA container for backup

3.1 Create an RDS container

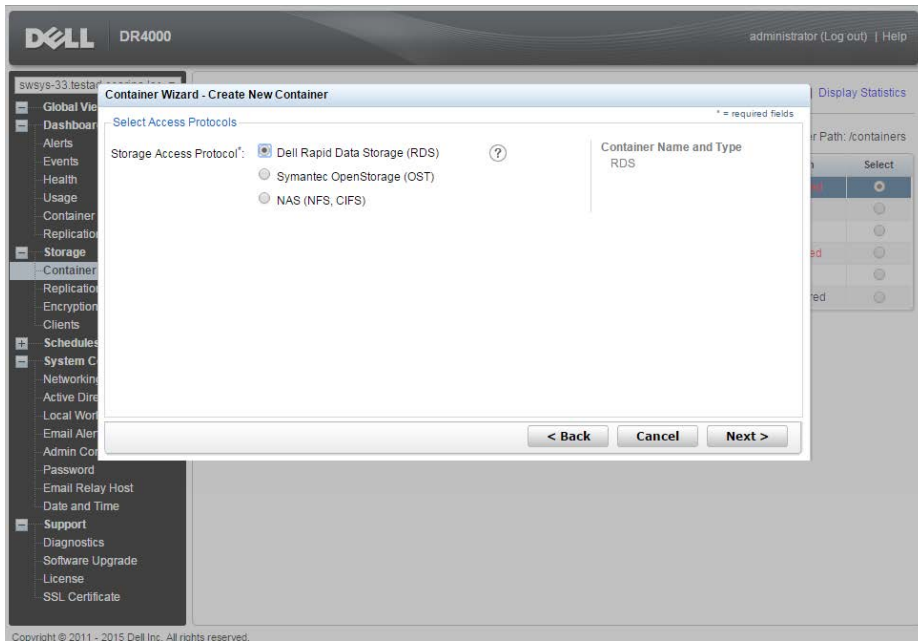
1. Select **Containers** in the left side of the DR Series system GUI, and then click **Create**.



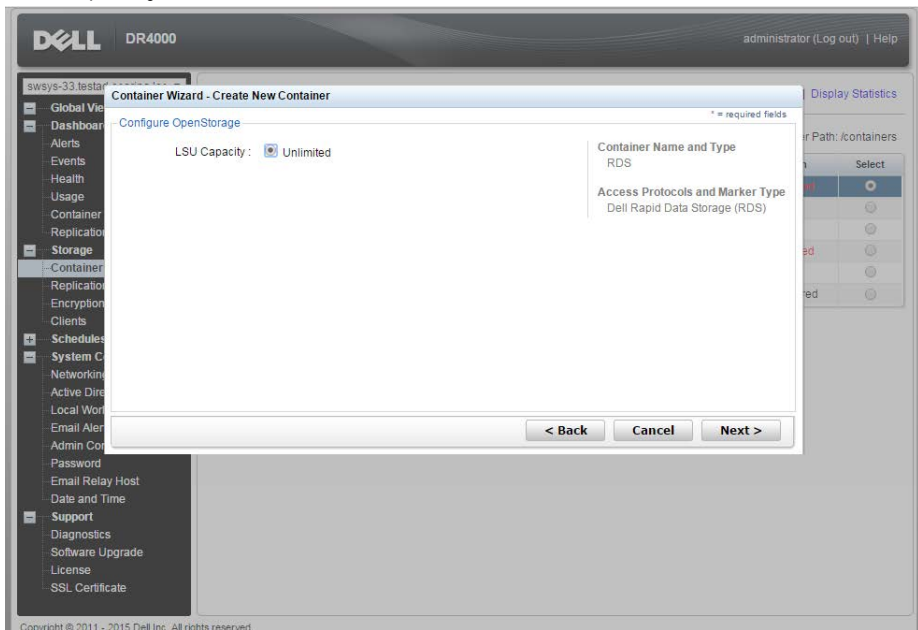
2. Enter a container name and then click **Next**.



3. For the Storage Access Protocol, select **Dell Rapid Data Storage (RDS)**.



4. LSU capacity is set as **Unlimited**. Click **Next**.



5. Click **Create New Container**, and then confirm that the container was added.

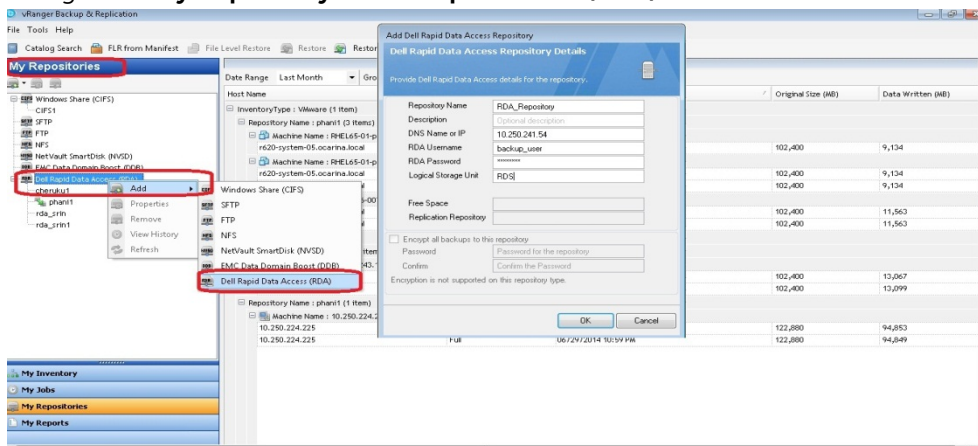




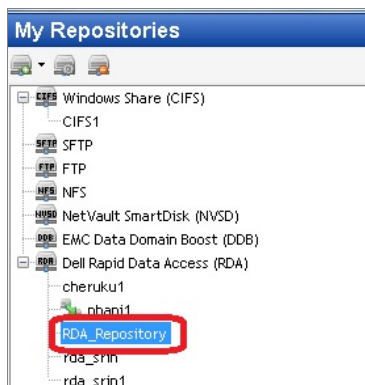
3.2 Configure the Dell RDA device in vRanger

Configure the Dell RDA device in vRanger as follows:

1. Navigate to **My Repository > Dell Rapid Access (RDA)**.



2. Confirm that the RDA devices are added.



3. In the DR Series system GUI, navigate to **Storage > Client** and click the **RDA** tab to review the configured RDA device details.

IBM Business Transfor... w3 IBM Home Page w3 IBM Standard Softwar... Movies_booking Testing Home Google Resigning to protest ... Home Lo

Events
Health
Usage
Container Statistics
Replication Statistics
Storage
Containers
Clients

NFS CIFS **RDA** DR2000v

Number of RDA Clients: 1

| Name | IP Address | Type | Plug-In | Backup Software | Idle Time | Connection | Mode | Select |
|---------------|----------------|------|---------|-----------------|-----------|------------|--------|-----------------------|
| Babuk-Win7-01 | 10.250.224.175 | RDS | 3.1.66 | vRanger 7.0 | -- | 0 | Dedupe | <input type="radio"/> |

***To see the client OS type and version, please mouse over the entry in the "Name" column.

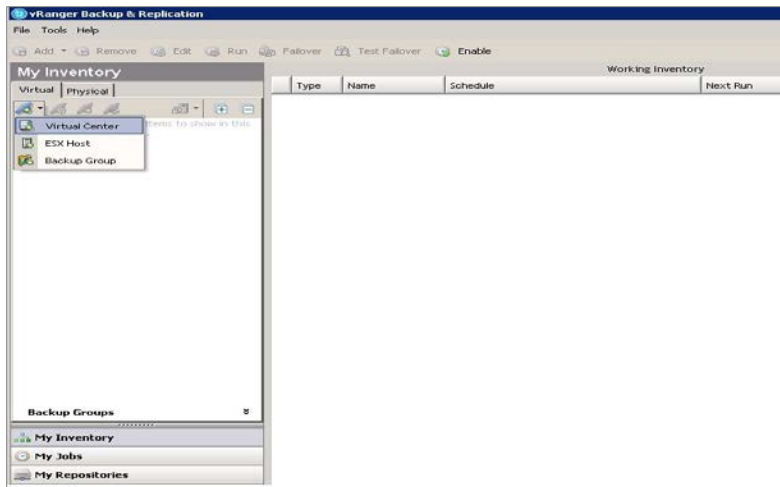


4 Setting up vRanger

NOTES:

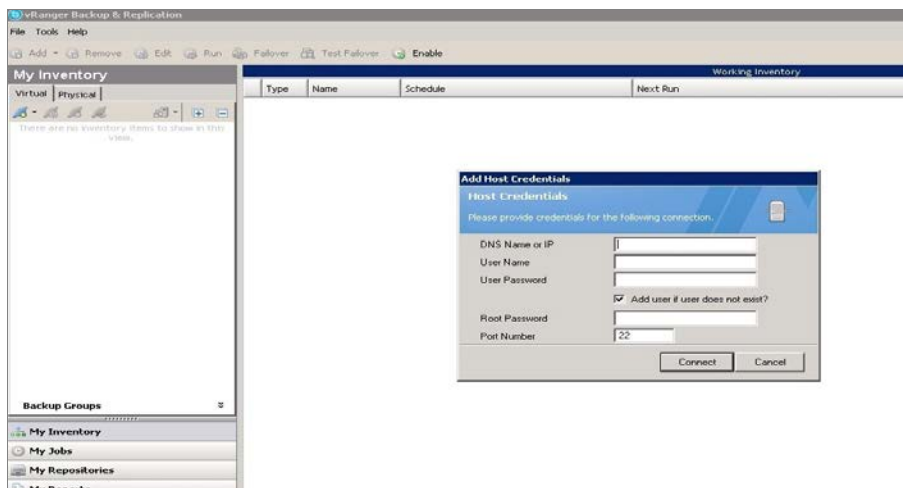
- To maximize DR Series system vRanger storage capacity savings, Dell recommends that you adhere exactly to the following setup settings.
- The backup formats differ completely when setup settings are changed. Hence, all savings on vRanger installations that had settings changed in between are null and void.

1. Open the vRanger Backup and Replication Console.
2. Go to **My Inventory > Virtual > Add** and add either your vCenter or ESX host.



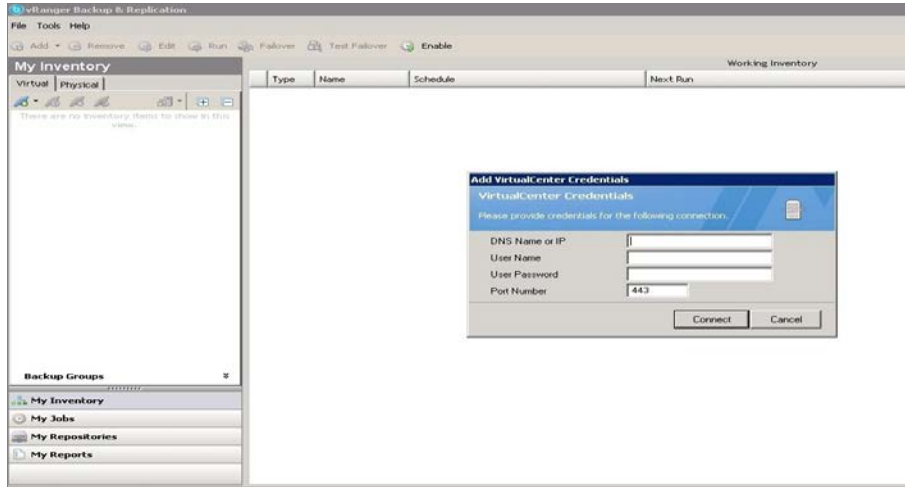
- **Adding ESX host**

For ESX, you need to add the ESX host with root credentials.

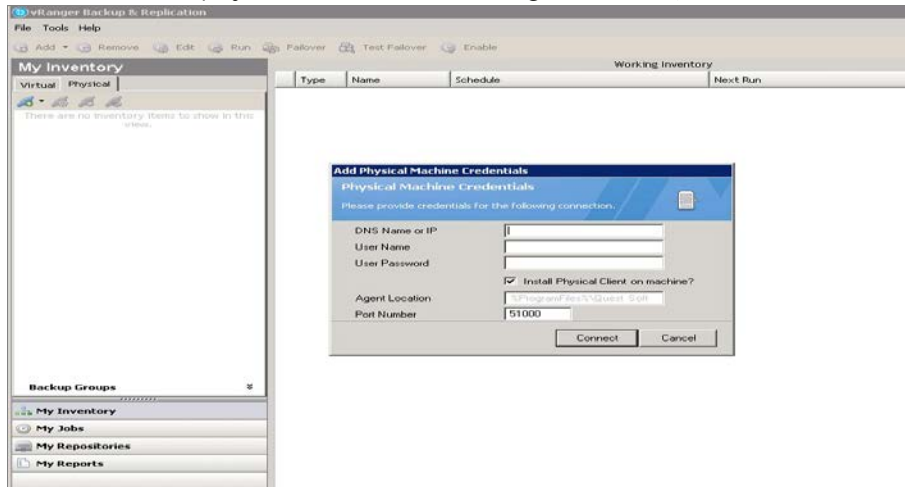


- **Adding Virtual Center**

When adding the vCenter host you need to provide the IP/Hostname and the logon credentials of the Virtual Center.

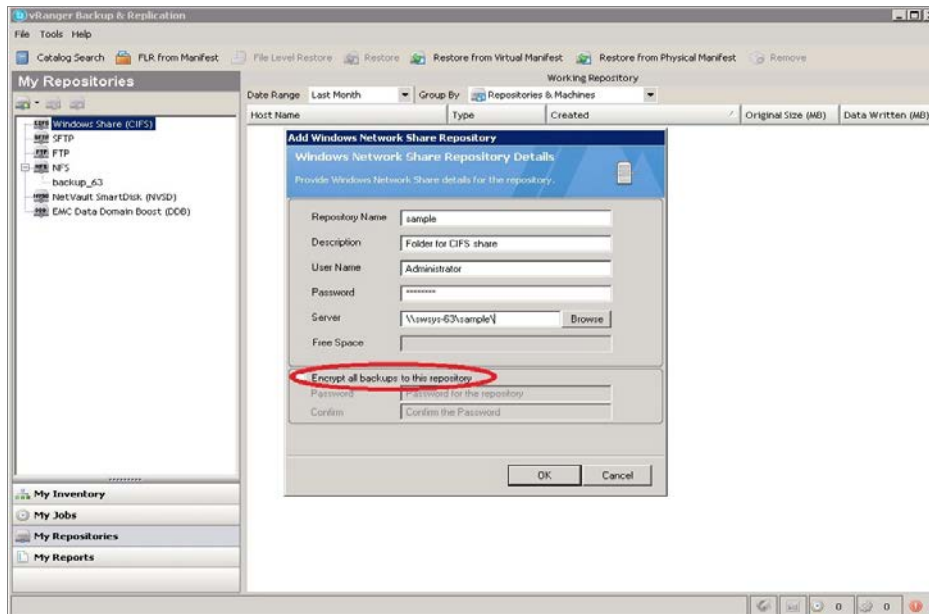


3. To add the physical server, go to **My Inventory > Physical > Add**, and then select the option, **Install physical client on machine?**. By default, the physical client is installed on the physical machine at *C:\Program Files\Quest Software*.

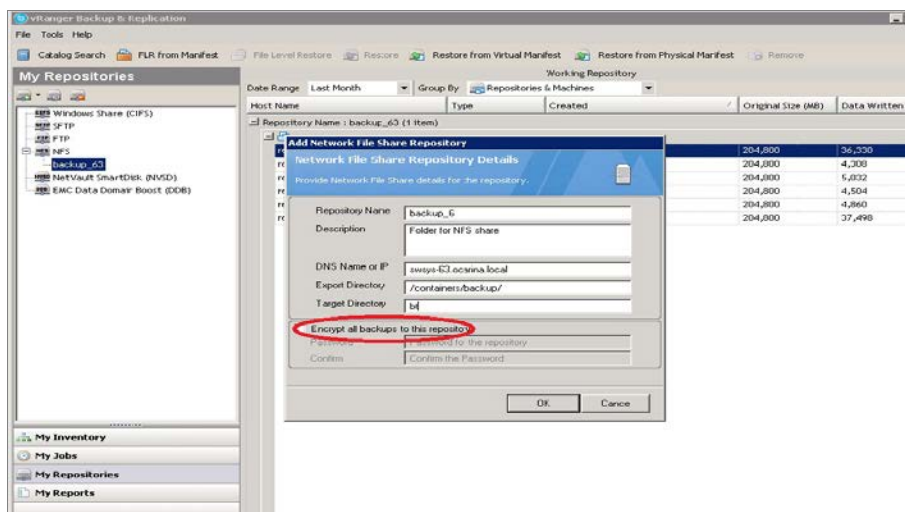


4. You need to map the CIFS/NFS share to vRanger. (vRanger supports both CIFS and NFS protocols).
 - **Mapping a CIFS share**
To map a CIFS share, go to **My repository > Add > Windows Share (CIFS)**, enter the required details, and then click **OK**.

Note: Dell recommends that you do **not** enable encryption.

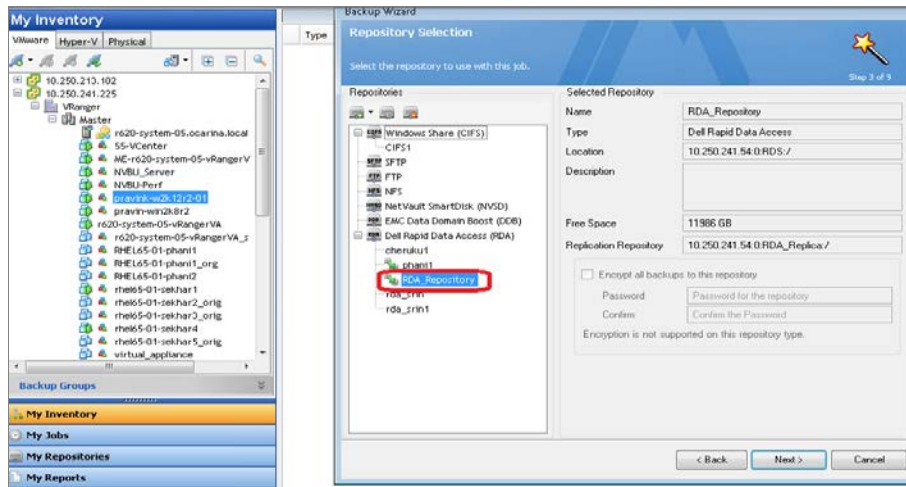


- **Mapping an NFS share**
To map an NFS share, go to **My repository > Add > NFS**, enter the required credentials, and then click **OK**.

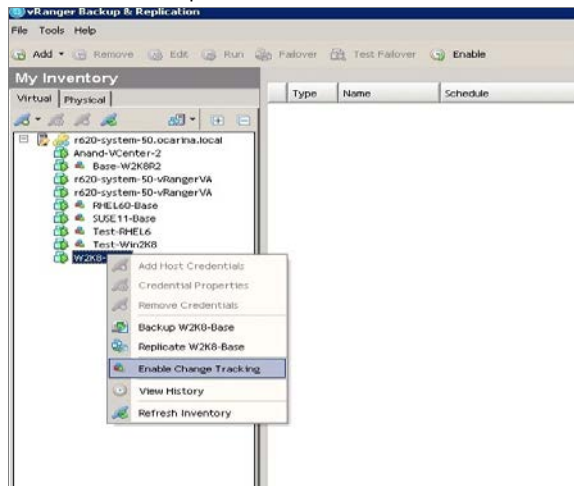


Note: **Export Directory** lists the export directory but not the complete share path (that is, it does not provide IP/hostname of the DR Series system). **Target Directory** lists the target directory name that was created under the share directory [Mentioned above in section 2].

- For RDA, select the RDA device configured in the previous section, "Configure the Dell RDA device in vRanger."

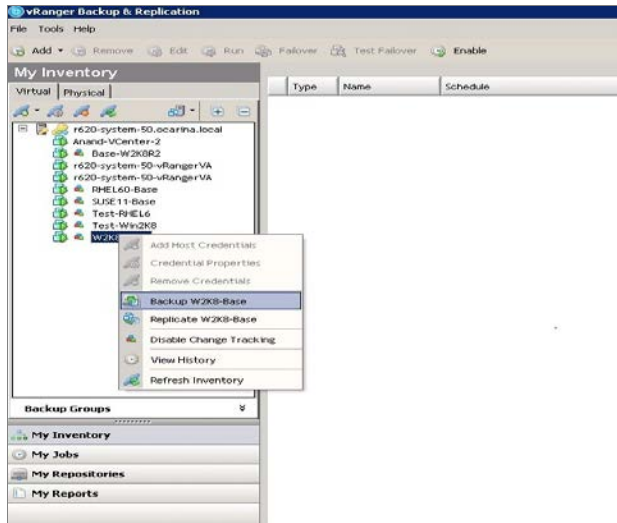


5. Right-click and enable change tracking (**Change Block Tracking**) on the VM you want to back up.

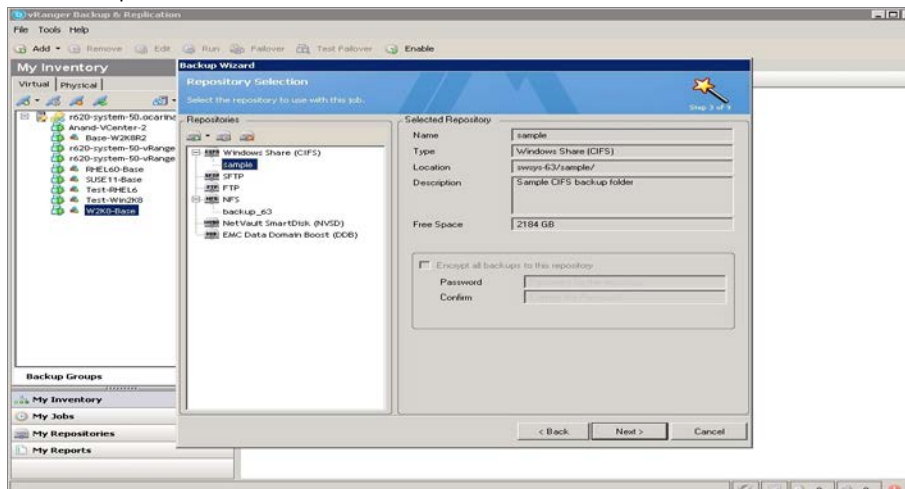


6. Select a virtual machine for backup, and right-click **Backup**, which opens the backup wizard.

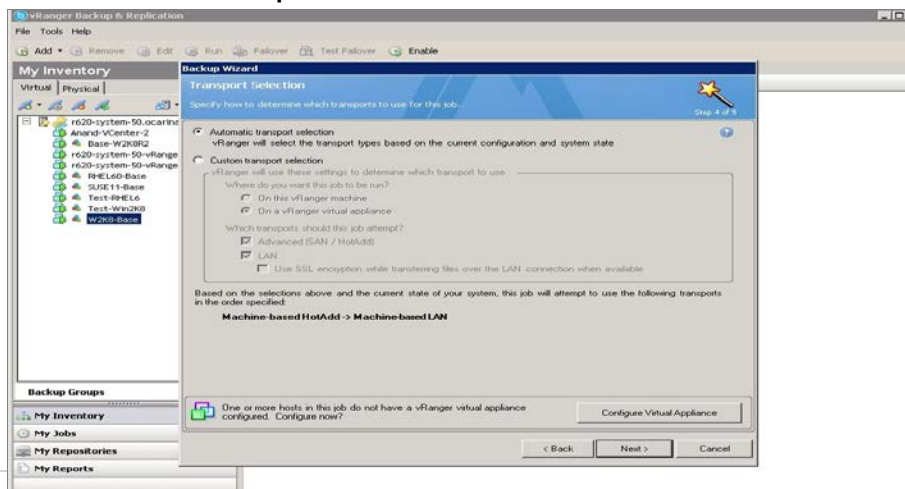




7. Select disks to back up, and then select the repository to which the VM is to be backed up.



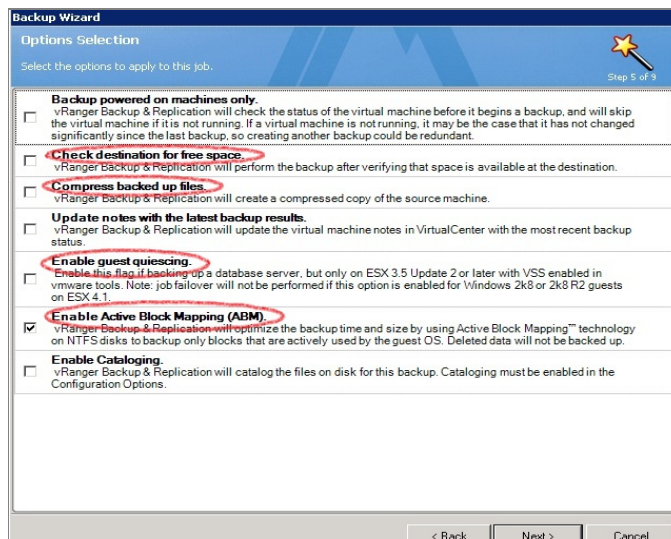
8. Select the appropriate Transport type according to the setup. If you are unsure, click **Automatic Transport Selection**.



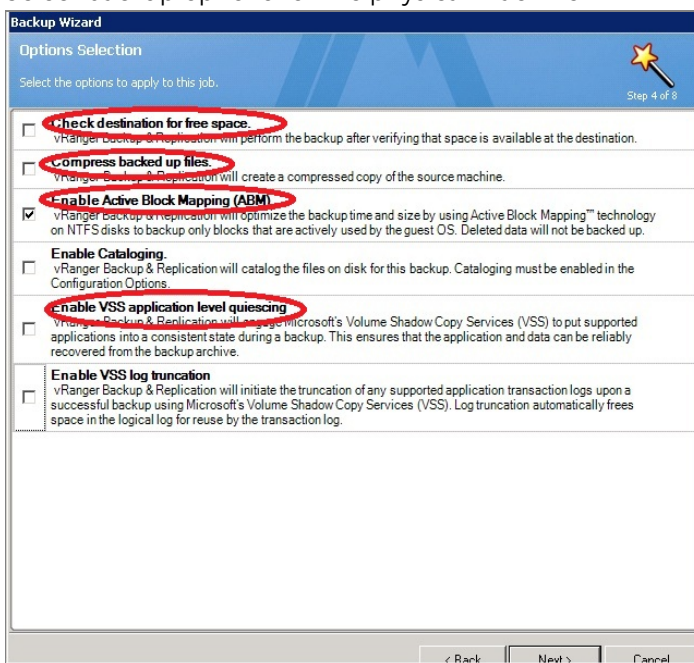
9. Select backup options for the VM.

NOTES:

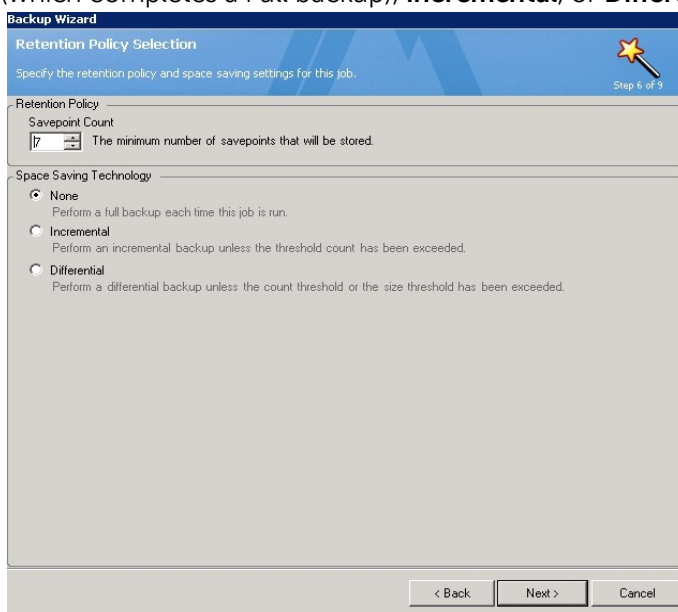
- Always Disable 'Check destination for free space' since the DR Series system supports deduplication and so the overall space that is occupied is less.
- Always enable ABM (Active Block Mapping) for better overall results from both vRanger and DR.
- vRanger recommends enabling 'Guest quiescing' in case of backing up a database (Example: Exchange server).
- Disable 'compress backed up files' for better savings.



10. Select backup options for the physical machine.

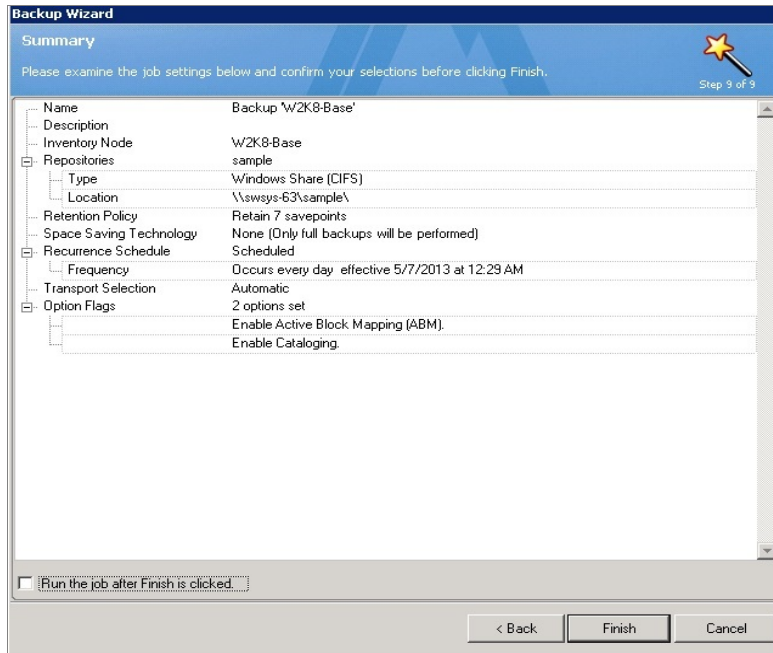


11. For the Retention Policy, select the type of backup technology as either **None** (which completes a Full backup), **Incremental**, or **Differential**.

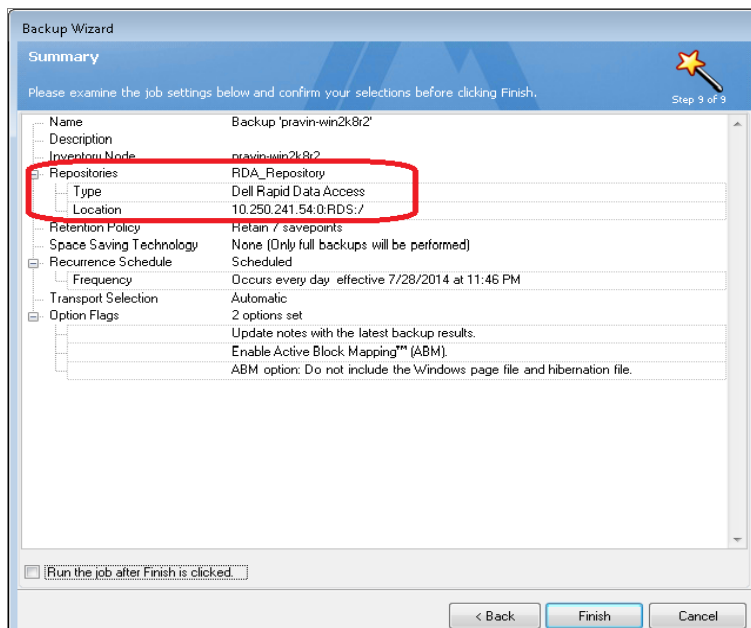


12. Schedule the backup and then provide the mail server details for sending mail.

The following example shows a backup summary page that opens when the target is a CIFS repository.



The following example shows a backup summary page that opens when the target is a RDA repository.



5 Viewing a history of optimized copies in the DR Series system GUI

In the DR Series system GUI, go to the **Container Statistics > Duplication** tab to view a history of optimized VM copies, as shown in the following example.

Marker Type: None **Connection Type: RDS**

RDS Login Entry User: backup_user

Capacity Duplication Client Statistics

Duplication Statistics

| | |
|---|---|
| <p>Inbound</p> <p>Bytes Copied (logical): 0 bytes</p> <p>Bytes Transferred (actual): 0 bytes</p> <p>Network Bandwidth Savings: 0.00 %</p> <p>Current Count Of Active Files: 0</p> <p>Replication Errors: 0</p> | <p>Outbound</p> <p>Bytes Copied (logical): 8.9 GiB</p> <p>Bytes Transferred (actual): 938 KiB</p> <p>Network Bandwidth Savings: 99.99 %</p> <p>Current Count Of Active Files: 4</p> <p>Replication Errors: 0</p> |
|---|---|

Active Optimized Copies

| File Name | Peer IP | Peer ID | Bytes Sent | Pending Bytes |
|-----------|---------|---------|------------|---------------|
|-----------|---------|---------|------------|---------------|

History of Optimized Copies

| File Name | Peer IP | Peer ID | Logical Bytes to Send | Rep. Rate | Savings | Replicated at | Encryption |
|---|---------------|---------|-----------------------|--------------|---------|----------------------|------------|
| /rhe65-01-sekhar2_orig_42016af2-bcb0-f1b4-5fa6-48e70992934c/rhe65-01-sekhar2_orig_20140728_232917_65a188ba-63b0-41d1-ada3-587939ac45c3/rhe65-01-sekhar2_orig_20140728_232917_F1_rhe65-01-sekhar2_vmdk.var | 10.250.241.54 | 5 | 9578719655Bytes | 7806617KiB/s | 99.99% | 2014-07-28 2 3:38:51 | None |

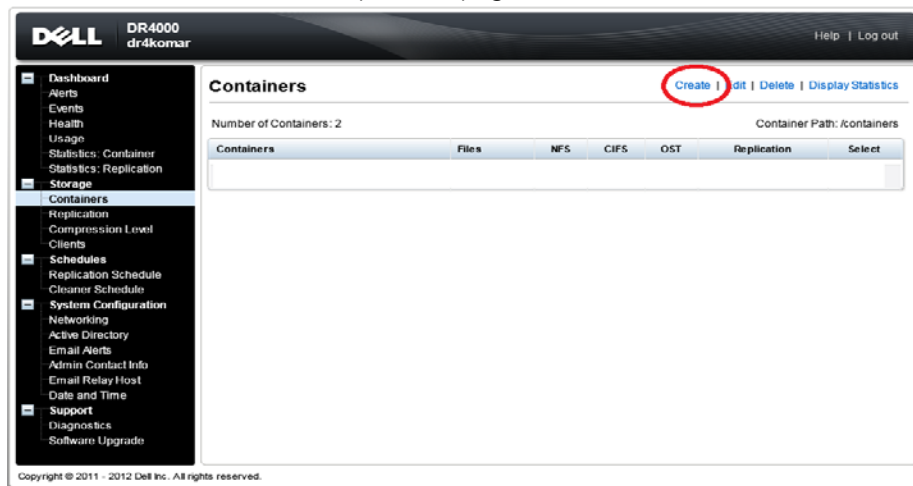


6 Configuring replication at the source

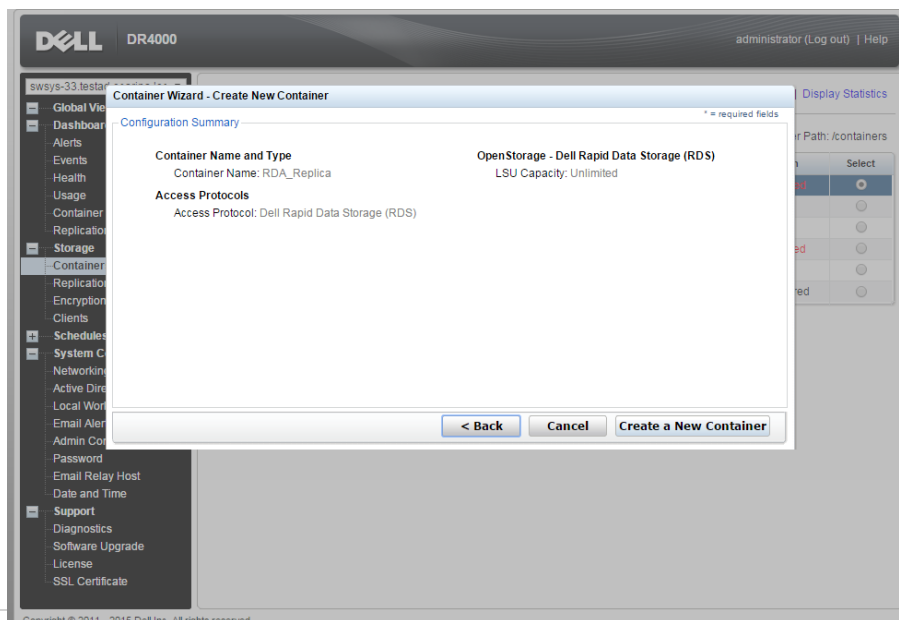
This configuration enables source-side deduplication to reduce the amount of data moved over the network to the appliance.

6.1 Create an RDS container in the Dell DR Series system for the replication target

1. Select **Containers** in the left navigation area of the DR Series system GUI, and then click the **Create** link at the top of the page.

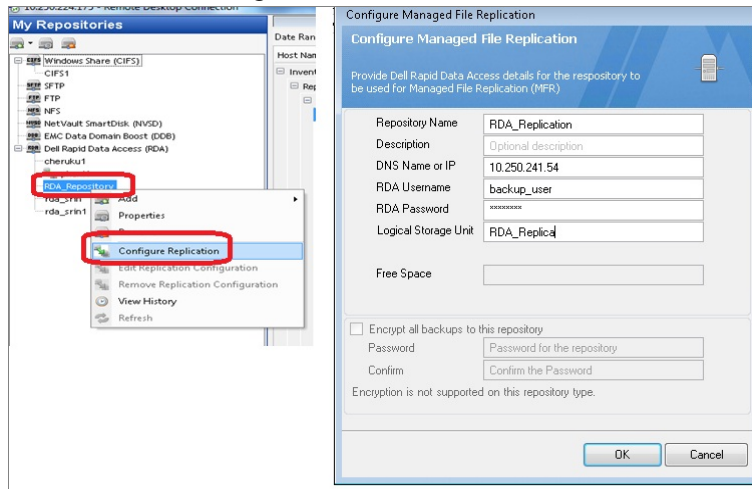


2. Enter a Container Name, and then click **Next**.
3. For Storage Access Protocol, **select Dell Rapid Data Storage (RDS)**. Follow the steps described in the previous section to create a container. Confirm the container details and click **Create a New Container**.

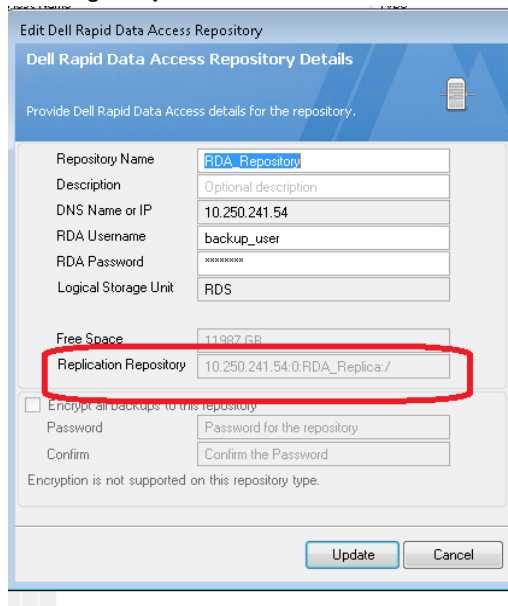


6.2 Configure replication at the target container in vRanger

1. Select the RDA device, right-click **Configure Replication**, and then enter the DR Series server and target container details.



2. Confirm the replication configuration by right-clicking the RDA repository and clicking **Properties**.



7 Setting up the DR Series system cleaner

Performing scheduled disk space reclamation operations are recommended as a method for recovering disk space from system containers in which files were deleted as a result of deduplication.

The system cleaner runs during idle time. If your workflow does not have a sufficient amount of idle time on a daily basis, then you should consider scheduling the cleaner to force it to run during a scheduled time.

If necessary, you can perform the procedure shown in the following example screenshot to force the cleaner to run. After all of the backup jobs are set up, the DR Series system cleaner can be scheduled. The DR Series system cleaner should run at least six hours per week when backups are not taking place, and generally after a backup job has completed.

The screenshot shows the Dell DR Series system cleaner configuration interface. The sidebar menu on the left has 'Cleaner Schedule' highlighted. The main content area displays the 'Cleaner Schedule' configuration page. The page includes a 'Schedule Cleaner' button (highlighted with a red arrow) and an 'Edit Schedule' button (highlighted with a red box). The page also shows the system time zone as US/Pacific, Fri Jul 5 05:00:41 2013, and a note: 'When no schedule is set, the cleaner will run as needed.' Below this is a table with columns for Day, Start Time, and Stop Time.

| Day | Start Time | Stop Time |
|-----|------------|-----------|
| Sun | -- | -- |
| Mon | -- | -- |
| Tue | -- | -- |
| Wed | -- | -- |
| Thu | -- | -- |
| Fri | -- | -- |
| Sat | -- | -- |



8 Monitoring deduplication, compression, and performance

After backup jobs have run, the DR Series system tracks capacity, storage savings, and throughput on the DR Series system dashboard. This information is valuable in understanding the benefits of the DR Series system.

Note: Deduplication ratios increase over time. It is not uncommon to see a 2-4x reduction (25-50% total savings) on the initial backup. As additional full backup jobs are completed, the ratios will increase. Backup jobs with a 12-week retention will average a 15x ratio, in most cases.

